

Immediate Response Report

Addressing Food and Nutrition Needs of Flood-Affected People in Noakhali

OVERVIEW

Participatory Research & Action Network-PRAAN, a frontline organization committed to building resilient communities, focuses on promoting human and economic rights through rapid, efficient, and sustainable disaster response and recovery efforts. Noakhali is a coastal climate hotspot where our work centers on empowering individuals and communities fostering long-term resilience in the face of emergencies. Our mission is to minimize human suffering during disasters and empower affected communities to rebuild their lives with dignity and self-reliance.

The 2024 floods in Noakhali, which began on August 20 and extended through mid-October, were triggered by intense rainfall, compounded by high tides along Bangladesh's coastline. This monsoon season has been particularly severe, with climate change amplifying the impact through rising sea levels and unpredictable rainfall patterns. As a result, Noakhali, already prone to both riverine and coastal flooding, experienced extensive flooding as inadequate drainage systems were overwhelmed. This disaster led to widespread displacement, with many families losing their homes or finding no previous recent

record of seen disaster in their living spaces submerged.

According to official estimates, eight upazilas and seven municipal areas in Noakhali were affected, impacting approximately 1,981,700 residents and creating a severe drinking water, food crises. A total of 1,098 temporary shelters were established, housing over 182,309 people.

In response to this crisis, shelters were set up in schools, community centers, and open fields to accommodate displaced families. However, these shelters quickly became overcrowded, with residents facing food shortages, heightened health risks, risks of gender-based violence, and limited privacy and basic amenities. Overcrowding and poor sanitation created additional health risks, particularly due to the lack of adequate facilities.

The floods also caused significant damage to homes, infrastructure, and agricultural land, with floodwaters lingering for weeks and delaying recovery efforts. Internal communication with several upazilas was interrupted, further complicating emergency response efforts and delaying the provision of support.

From the beginning, shelters struggled to meet basic needs, with shortages of clean water, nutritious food, and healthcare. Initially, local residents provided dry food, but this was insufficient to meet nutritional needs, particularly for children, leading to increased illness among shelter occupants. As a result, ensuring food security and nutrition through the provision of cooked meals became a priority in the relief efforts.

On August 22, PRAAN, with support from ActionAid Bangladesh, launched the Community Kitchen program to provide hot meals (Cooked Food) to shelter residents. This initiative has been crucial for maintaining health and morale for all, especial-

ly among vulnerable groups such as children, the elderly, and pregnant women.

The Community Kitchen initiative took a community-led, youth-driven approach, mobilizing young people from various backgrounds to lead the response process. Local youth, university students, and members of youth organizations collaborated closely with affected communities, not only in cooking and distributing food but also in organizing and managing essential services. These young volunteers played a vital role in maintaining hygiene, offering basic medical support, and ensuring the orderly operation of the shelters.

SUMMEY OF IMMEDIATE RESPONSE



**36,532
HOT MEAL**

Distributed 36,532 meals of nutritious, cooked food to flood-affected individuals in 34 shelters, addressing food security and nutritional needs in 04 Upazilas of Noakhali District.



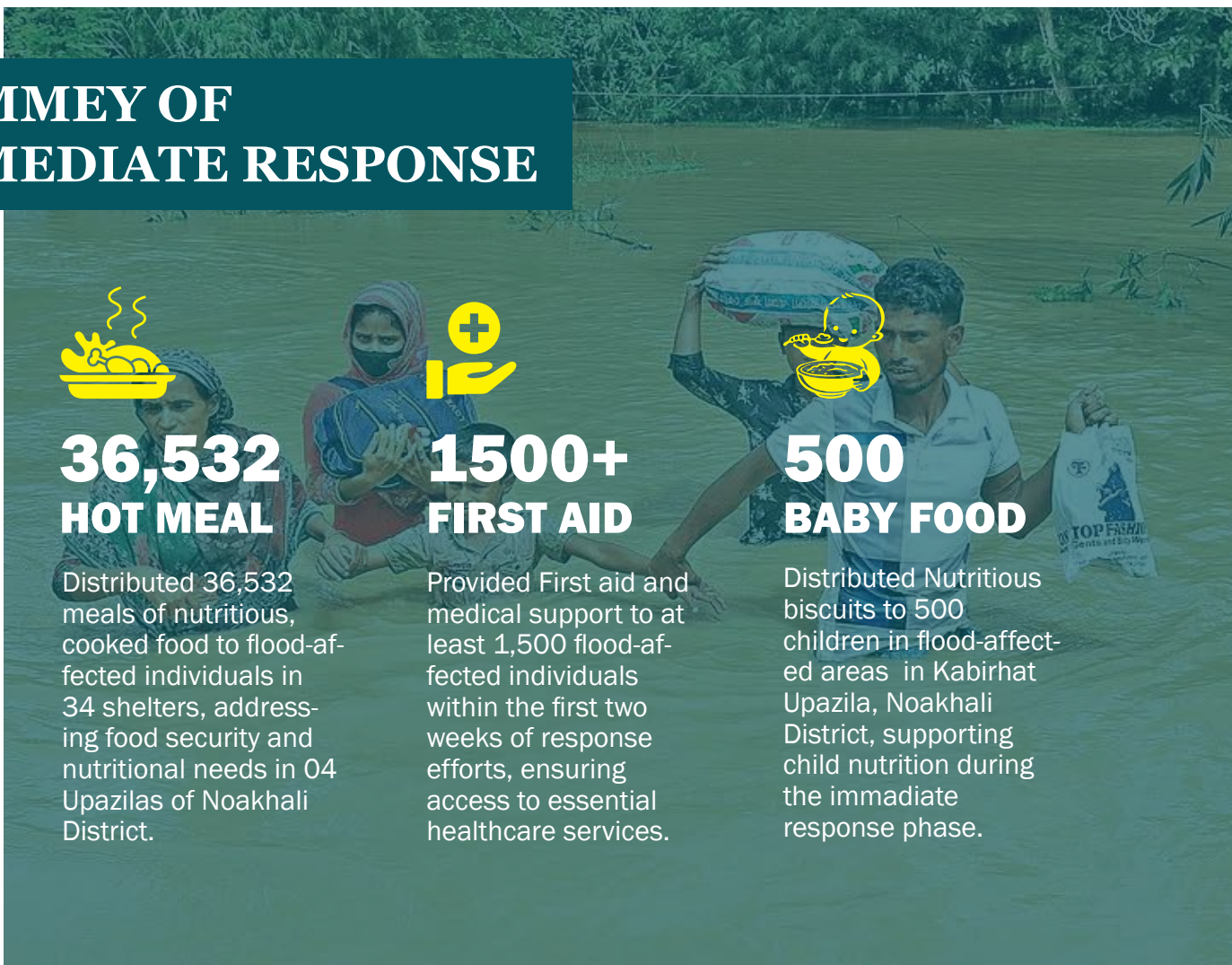
**1500+
FIRST AID**

Provided First aid and medical support to at least 1,500 flood-affected individuals within the first two weeks of response efforts, ensuring access to essential healthcare services.



**500
BABY FOOD**

Distributed Nutritious biscuits to 500 children in flood-affected areas in Kabirhat Upazila, Noakhali District, supporting child nutrition during the immediate response phase.





COMMUNITY KITCHEN

From the early stages of the flood, PRAAN, supported by ActionAid Bangladesh and crowd-funded resources, launched the ‘Community Kitchen’ program in Noakhali to address severe food insecurity among flood-affected families. These families had limited or no access to cooking facilities, clean water, safe drinking water or wash facilities due to extensive flooding, infrastructure damage, and displacement into temporary shelters. Between August 23 and September 4, the program provided 36,532 nutritious, cooked meals to individuals across 28 shelters in Kabirhat, Sadar, Begumganj, and Sonaimuri Upazilas. The Community Kitchen initiative, in collaboration with ActionAid Bangladesh, served balanced, hot meals daily, addressing urgent nutritional needs and reducing the risk of illness associated with poor sanitation and contaminated water in crowded shelters. This program became essential for maintaining the health and morale of the affected communities.

Most community kitchens were managed by displaced individuals and local volunteers. Since many temporary shelters were set up quickly without established management structures, PRAAN established Shelter Management Committees to organize operations within each shelter. These committees, run by the sheltered community members, enabled efficient and community-driven shelter management, with PRAAN offering background support. This approach fostered local ownership and resilience, making the Community Kitchen program a vital part of PRAAN’s response to the flood crisis.

COVERAGE OF COMMUNITY KITCHEN

Through the Community Kitchen initiative, hot meals were distributed to flood-affected people across 17 temporary shelters in the Kabirhat, Sadar, Begumganj, and Sonaimuri Upazilas of Noakhali District. The program aimed to meet immediate food and nutrition needs during this critical time. Detailed information on the shelters and meals distributed is provided in the table below:

Name of Upazila	Name of Union	Total Union	Number of Shelters	Total Meals Distributed
Kabirhat	Sundalpur, Narottampur	02	10	19,540
Sadar	Noakhali Pourashava, Ashwadia, Neazpur	03	10	3,190
Begumganj	Sharifpur, Eklashpur	02	04	1,302
Sonaimuri	Joyag, Amishapara, Nadona Bargaon, Sonaimuri Pourashava Bazra, Chashirhat	07	10	12,500
Total		14	34	36,530

LIST OF SHELTERS COVERED FOR COOKED MEAL DISTRIBUTION

Sonaimuri Upazila

1. Joyag Collage, Joyag
2. Joyag Rashidiya Alim Madrasah, Joyag
3. Joyag Govt. Primary School, Joyag
4. Amishapara Krishok High School, Amishapara
6. Rubir Hat High School, Nadona
7. Hossainpur High School Bargaon
8. Sufia Khatun Crediit Madrasah, Sonaimuri Pourashava
9. Bozra Govt. Primary School, Bazra
10. Shaharpar Govt. Primary School, Chashirhat

Begumganj Upazila

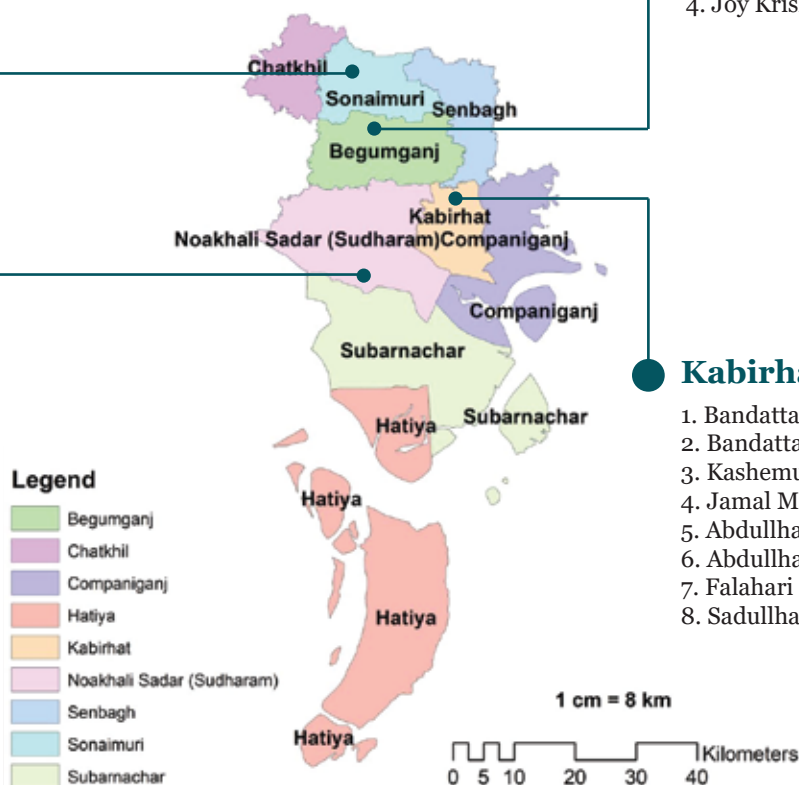
1. Uttar Sharifpur Karamatia Madrasa, Sharifpur
2. Babul Master Bari, Sharifpur
3. Hasanhat, Sharifpur
4. Joy Krishnapur Primary School, Eklashpur

Kabirhat Upazila

1. Bandatta High School, Sundalpur
2. Bandatta Govt. Primary School, Narottampur
3. Kashemul Ulum rashedia Madrasa, Sundalpur
4. Jamal Memorial KG School, Sundalpur
5. Abdullha Miarhar High School, Sundalpur
6. Abdullha Miarhar Primary School, Sundalpur
7. Falahari Madrasa, Narottampur
8. Sadullhapur Govt. Primary School, Narottampur

Noakhali Sadar Upazila

1. Social Welfare Office, Noakhali Pourashava
2. Noakhali Govt. Collage, Noakhali Pourashava
3. Arun Chandra High School, Noakhali Pourashava
4. Nurani Madani Marsga, Ashwadia
5. Uttar Maijdee Govt. Pri. School, Noakhali Poura
6. Policeline Govt. Pri. School, Noakhali Pourashava
7. Hasanpur Govt. Primary. School, Neazpur
8. Daulatpur Govt. Primary. School, Neazpur
9. Noakhali Women Collage, Noakhali Pourashava
10. Pach-Bari Shelter, Neazpur



MAP OF NOAKHALI DISTRICT

LIST OF UNION-WISE COOKED MEAL DISTRIBUTION DATA

Name of Upazila	Name of Union/ Pourashava	Number of Shelters	Total Meals Distributed
Kabirhat	Sundalpur	07	9,302
	Narottampur	03	10,238
Sadar	Noakhali Pourashava	06	890
	Ashwadia	01	300
	Neazpur	03	2,000 ⁺
Begumganj	Sharifpur	03	1200
	Eklashpur	01	102
Sonaimuri	Amishapara	01	60
	Bargaon	01	430
	Bazra	01	200
	Chashirhat	01	330
	Sonaimuri Pourashava	01	180
	Joyag	03	11,100
	Nadona	01	200

